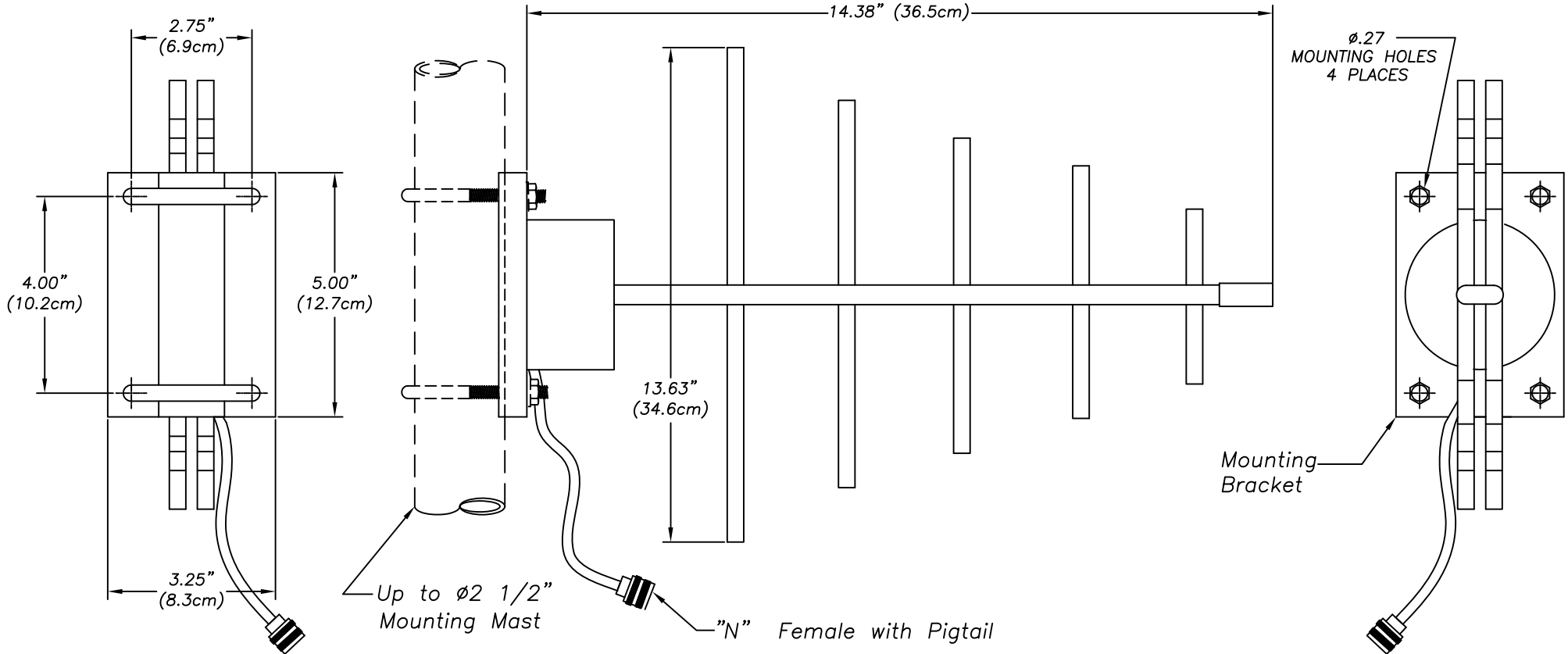


Y42400WB

Wide Band Yagi Antenna 10 Element, 9 dBi, 400-800 MHz



Mechanical Specifications

Material:	Aluminum Booms, $\phi 3/16$ " Solid Welded Elements
Connector:	12" Pigtail with N Connector
Radome:	3" UV Inhibited ABS
Length:	14.38" (36.5cm)
Weight:	2 lbs
Mounting:	2 1/2" Mast (Max.)
Wind Rating:	125 mph
Wind Load:	8.1 lbs

Electrical Specifications:

Frequency:	400-800 MHz
Gain:	9 dBi
VSWR:	<1.5:1
Front to Back Ratio:	20 dB
Nominal Impedance:	50 OHM Nominal
Beamwidth:	40° Vertical, 40° Horizontal
Power Rating:	150 Watts