

Technical Specification

1200-1400 MHz YAGI

Y221210

YAGI ANTENNA

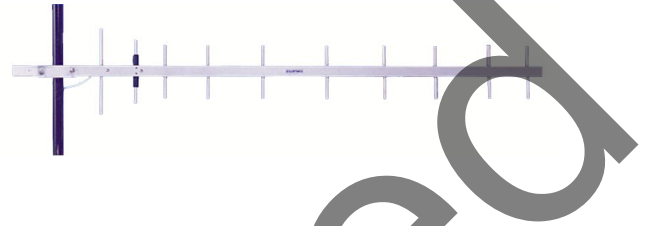
High Performance: This 10 element yagi antenna provides 10dBd gain with wide band performance.

Rugged and weatherproof: The construction of our standard duty yagis feature aluminum U channel with solid elements. All exposed areas are coated with UV polyester.

Lightweight and Durable: This yagi antenna is easily installed by one person, yet is designed to withstand 100 MPH winds.

Termination Options:

Type B: Direct TNC connection to the balun.



MECHANICAL SPECIFICATIONS

MATERIAL: 1/2" (4cm) aluminum U channel boom
3/16" solid elements

FINISH: UV inhibited polyester coat

LENGTH: 32 1/2" (82.5cm)

WEIGHT: 1 lb. (453g)

MOUNTING: 1 5/8" (4.4cm) mast maximum

FLAT PLATE AREA: .128 ft²

WIND SURVIVAL: 100 MPH (201kph)

WIND LOAD: 7.7 lbs.(4kg)

ELECTRICAL SPECIFICATIONS

GAIN: 10 dBd

FREQUENCY: 1200-1400MHz

F to B RATIO: 20dB

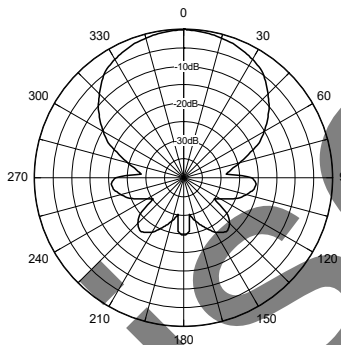
BANDWIDTH: 200MHz

VSWR: <2:1

POWER RATING: 150 watts

IMPEDANCE: 50 ohms

Horizontal Pattern



Vertical Pattern

